

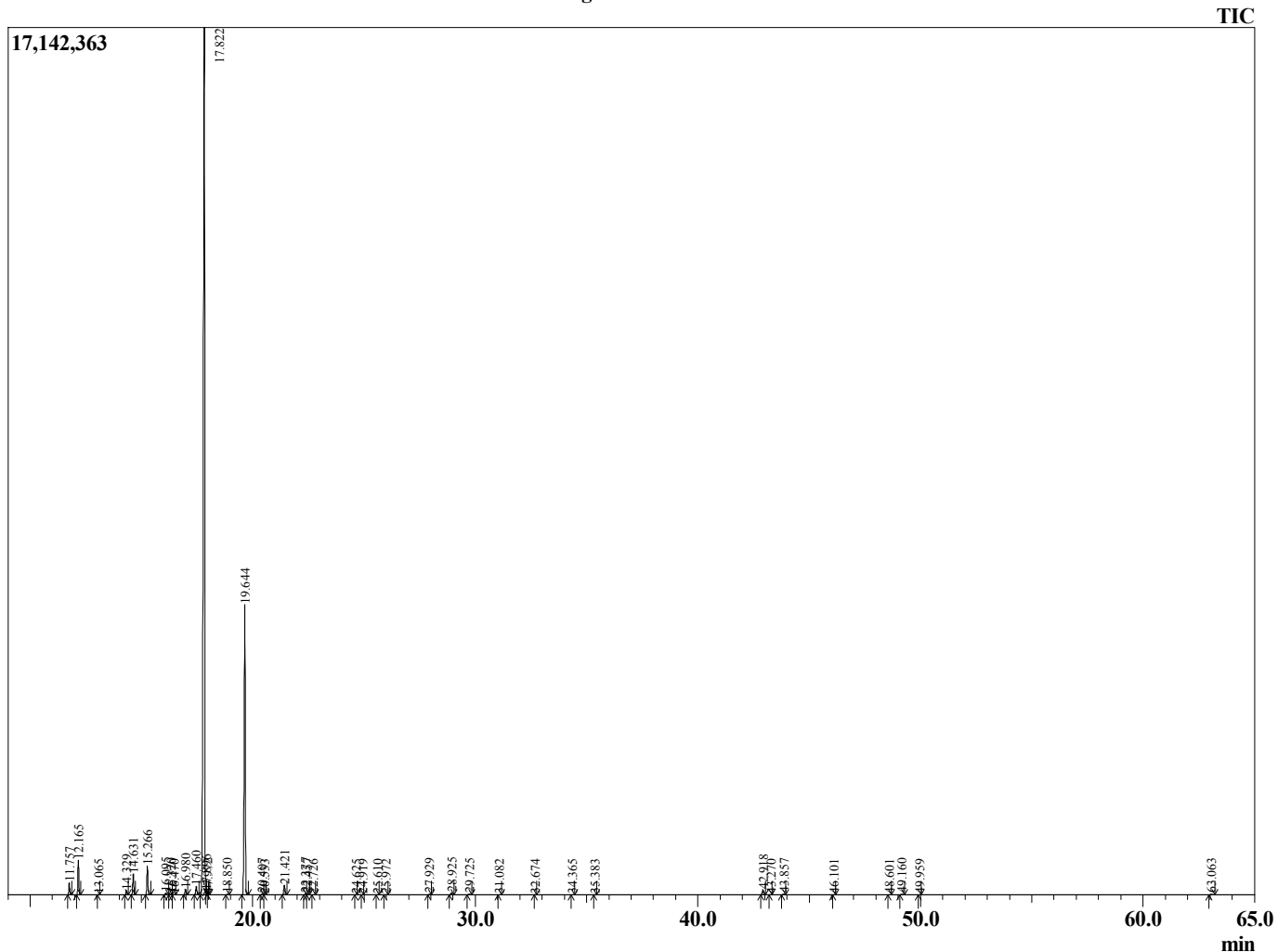
Sample Information

Sample Type : Essential Oil  
 Sample Name : Citrus deliciosa

Mandarin Red  
 Lot# ITE20-EW  
 Country: Italy



Chromatogram Citrus deliciosa



R.Time	Name	Area%
11.757	alpha-Thujene	0.66
12.165	alpha-Pinene	1.91
13.065	Camphene	0.01
14.329	Sabinene	0.26
14.631	beta-Pinene	1.28
15.266	Myrcene	1.77
16.095	Octanal	0.14
16.320	alpha-Phellandrene	0.06
16.470	delta-3-Carene	0.02
16.980	alpha-Terpinene	0.36
17.460	para-Cymene	0.58
17.822	Limonene	71.90
17.896	beta-Phellandrene	0.02
17.972	1,8-Cineole	0.02
18.850	trans-beta-Ocimene	0.03
19.644	gamma-Terpinene	19.07
20.407	trans-Sabinene hydrate	0.05
20.533	Pinol	0.02
21.421	Terpinolene	0.68
22.377	Linalool	0.09
22.457	cis-Sabinene hydrate	0.03
22.726	Nonanal	0.02
24.625	cis-Limonene oxide	0.01
24.919	trans-Limonene oxide	0.01
25.610	Camphor	0.02
25.972	Citronellal	0.02
27.929	Terpinen-4-ol	0.04
28.925	alpha-Terpineol	0.14
29.725	Decanal	0.08
31.082	Citronellol	0.02
32.674	Geraniol	0.01
34.365	Perillaldehyde	0.02
35.383	Thymol	0.02
42.918	Methyl N-methyl anthranilate	0.36
43.270	Undecanal	0.01
43.857	beta-Caryophyllene	0.08
46.101	alpha-Humulene	0.01
48.601	alpha-Selinene	0.02
49.160	(E,E)-alpha-Farnesene	0.07
49.959	delta-Cadinene	0.01
63.063	alpha-Sinensal	0.07
		100.00